

COUNTY: Jefferson  
 DISTRICT NUMBER: 1  
 CREATION DATE: October 2006

TOWNS IN WHICH THE DISTRICT IS LOCATED:  
 Adams, Champion, Ellisburg, Housfield, Lorraine,  
 Rodman, Rutland, Watertown

7.8' QUADRANGLES ON WHICH THE DISTRICT IS LOCATED:  
 Adams, Barnes Corners, Boylston Center, Copenhagen, Deferiet,  
 Rodman, Rutland Center, Sackets Harbor, Sandy Creek, Watertown

MAP SCALE: 1:48,000

KEY	
	Agricultural District 1
	Parcel Added to Agricultural District 1
	Parcel Deleted from Agricultural District 1
	Agricultural District 2
	Agricultural District 3
	Town/Village Boundary
	County Boundary
	Map Index Boundary

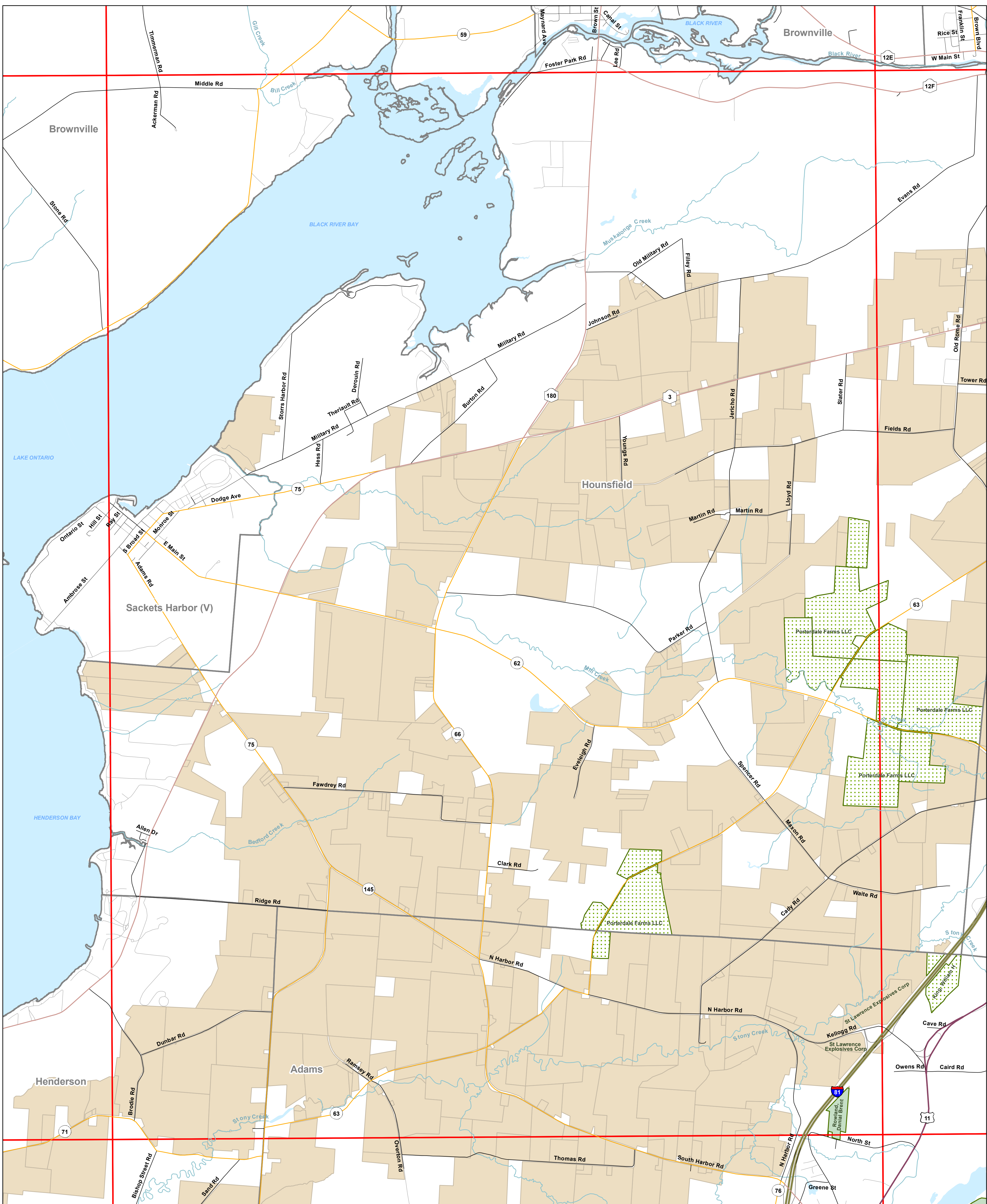
DATA SOURCES: Jefferson County Planning Department  
 Jefferson County Real Property Services, NYS CSCIC

GEOGRAPHIC REFERENCE INFORMATION:  
 Projection - New York State Plane Central  
 North American Datum 83 Feet

0 2,000 4,000 Feet  
 0 0.5 1 Mile

**INDEX MAP**





COUNTY: Jefferson

DISTRICT NUMBER: 1

CREATION DATE: October 2006

TOWNS IN WHICH THE DISTRICT IS LOCATED:  
Adams, Champion, Ellisburg, Hounsfield, Lorraine,  
Rodman, Rutland, Watertown

7.5' QUADRANGLES ON WHICH THE DISTRICT IS LOCATED:  
Adams, Barnes Corners, Boylston Center, Copenhagen, Deferiet,  
Rodman, Rutland Center, Sackets Harbor, Sandy Creek, Watertown

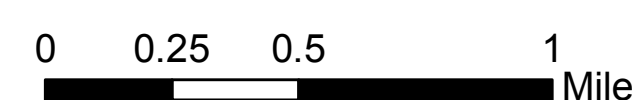
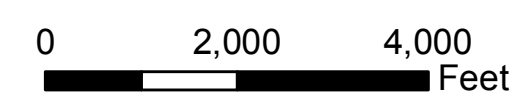
MAP SCALE: 1:24,000

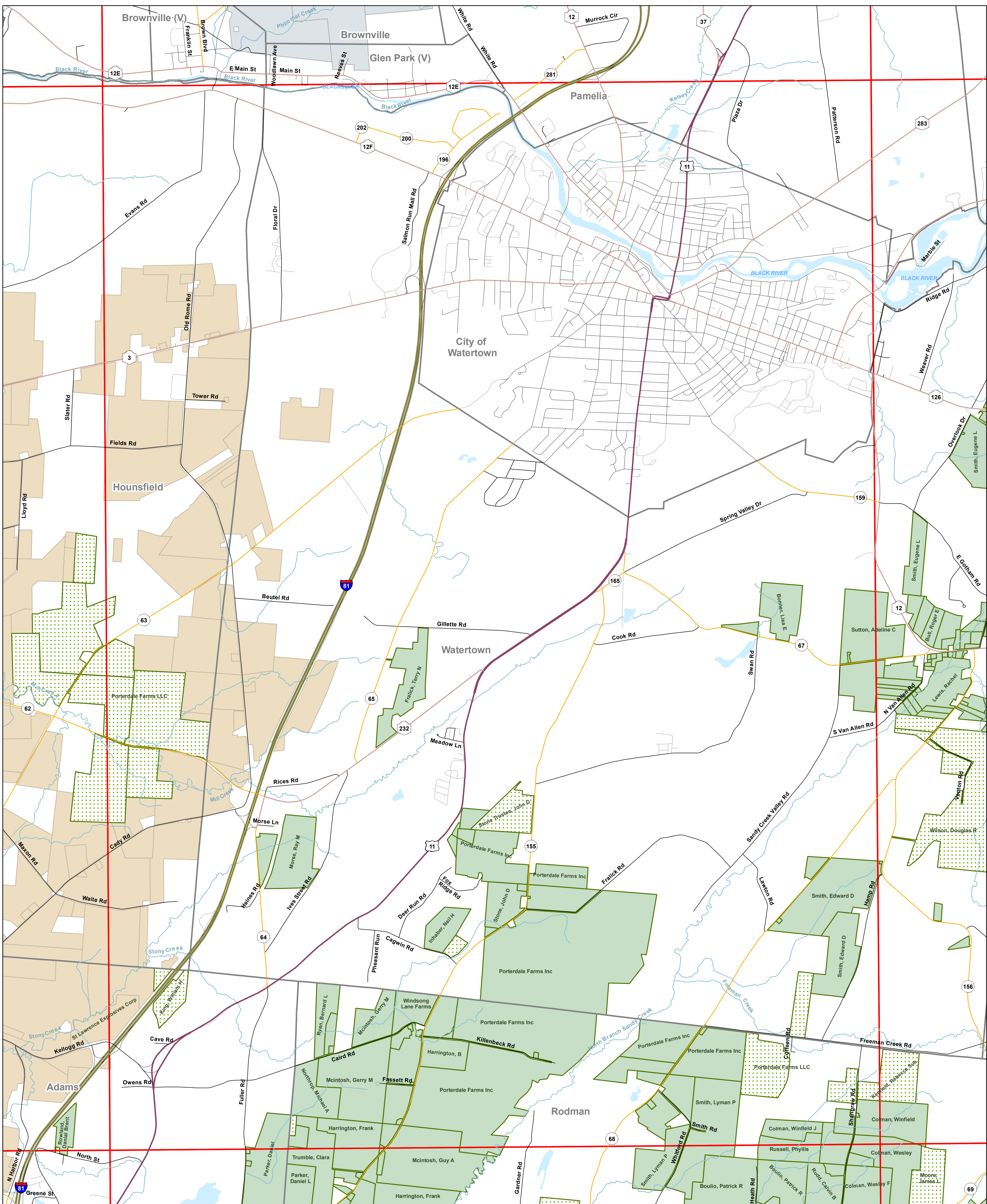
**MAP INDEX NUMBER:  
Map 2 Sackets Harbor Quad**

KEY	
	Interstate
	Federal
	State
	County
	Town
	Village
	Private
	Agricultural District 1
	Parcel Added to Agricultural District 1
	Parcel Deleted from Agricultural District 1
	Agricultural District 2
	Agricultural District 3
	Town/Village Boundary
	County Boundary
	Map Index Boundary
	River/Stream
	Lake/Pond

DATA SOURCES: Jefferson County Planning Department  
Jefferson County Real Property Services, NYS CSCIC

GEOGRAPHIC REFERENCE INFORMATION:  
Projection - New York State Plane Central  
North American Datum 83 Feet





COUNTY: Jefferson

DISTRICT NUMBER: 1

CREATION DATE: October 2006

TOWNS IN WHICH THE DISTRICT IS LOCATED:  
Adams, Champion, Ellisburg, Hounsfield, Lorraine,  
Rodman, Rutland, Watertown

7.5' QUADRANGLES ON WHICH THE DISTRICT IS LOCATED:  
Adams, Barnes Corners, Boylston Center, Copenhagen, Deferiet,  
Rodman, Rutland Center, Sackets Harbor, Sandy Creek, Watertown

MAP SCALE: 1:24,000

**MAP INDEX NUMBER:  
Map 3 Watertown Quad**

KEY	
	Interstate
	Federal
	State
	County
	Town
	Village
	Private
	Agricultural District 1
	Parcel Added to Agricultural District 1
	Parcel Deleted from Agricultural District 1
	Agricultural District 2
	Agricultural District 3
	Town/Village Boundary
	County Boundary
	Map Index Boundary
	River/Stream
	Lake/Pond

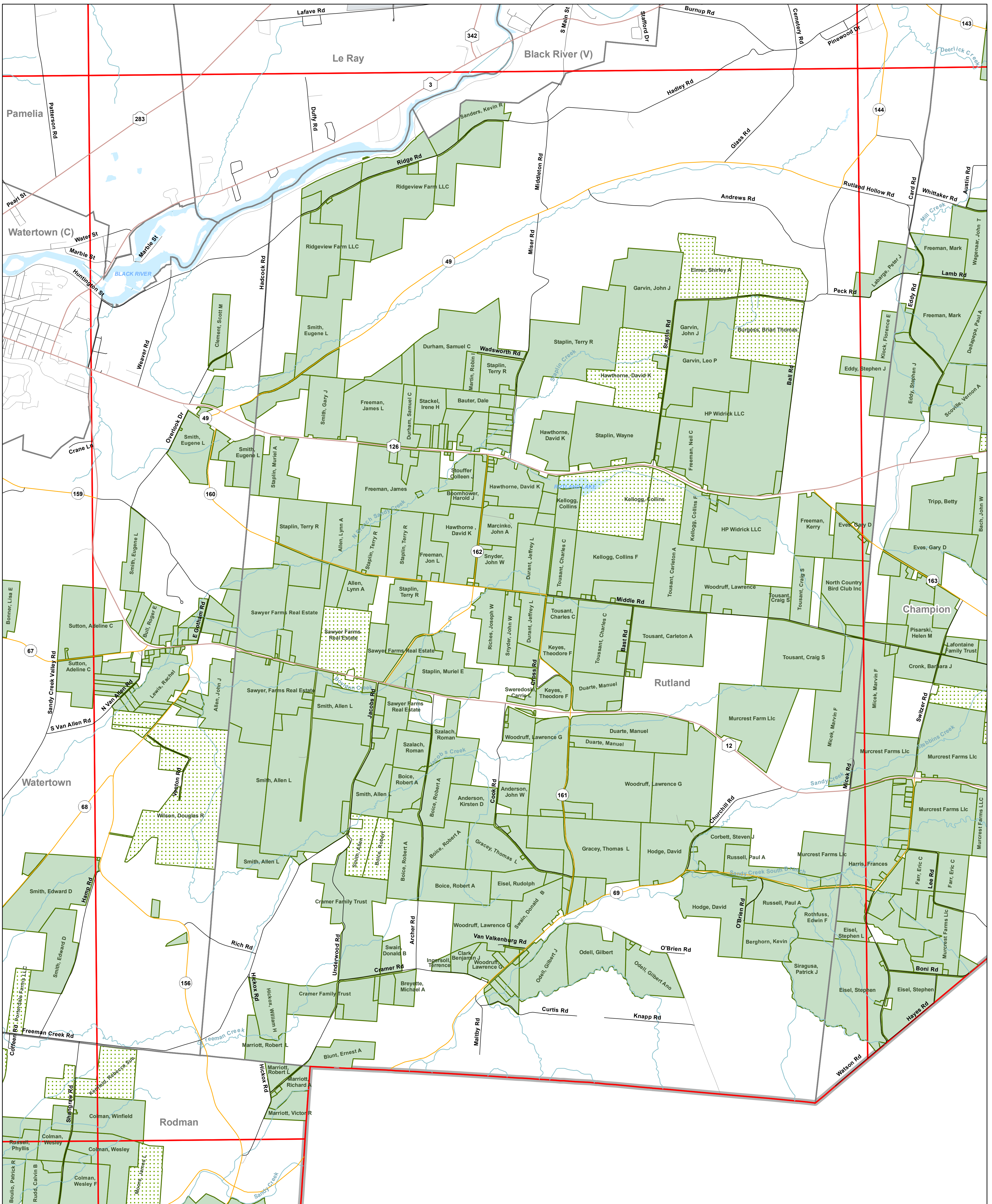
DATA SOURCES: Jefferson County Planning Department  
Jefferson County Real Property Services, NYS CSCIC

GEOGRAPHIC REFERENCE INFORMATION:  
Projection - New York State Plane Central  
North American Datum 83 Feet

0 2,000 4,000  
Feet

0 0.25 0.5 1  
Mile





**MAP INDEX NUMBER:  
Map 4 Rutland Center Quad**

COUNTY: Jefferson











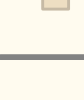
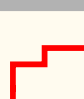

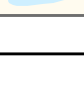


DISTRICT NUMBER: 1

CREATION DATE: October 2006

TOWNS IN WHICH THE DISTRICT IS LOCATED:  
Adams, Champion, Ellisburg, Hounsfield, Lorraine,  
Rodman, Rutland, Watertown

7.5' QUADRANGLES ON WHICH THE DISTRICT IS LOCATED:  
Adams, Barnes Corners, Boylston Center, Copenhagen, Deferiet,  
Rodman, Rutland Center, Sackets Harbor, Sandy Creek, Watertown

MAP SCALE: 1:24,000

KEY	
	Interstate
	Federal
	State
	County
	Town
	Village
	Private
	Agricultural District 1
	Parcel Added to Agricultural District 1
	Parcel Deleted from Agricultural District 1
	Agricultural District 2
	Agricultural District 3
	Town/Village Boundary
	County Boundary
	Map Index Boundary
	River/Stream
	Lake/Pond

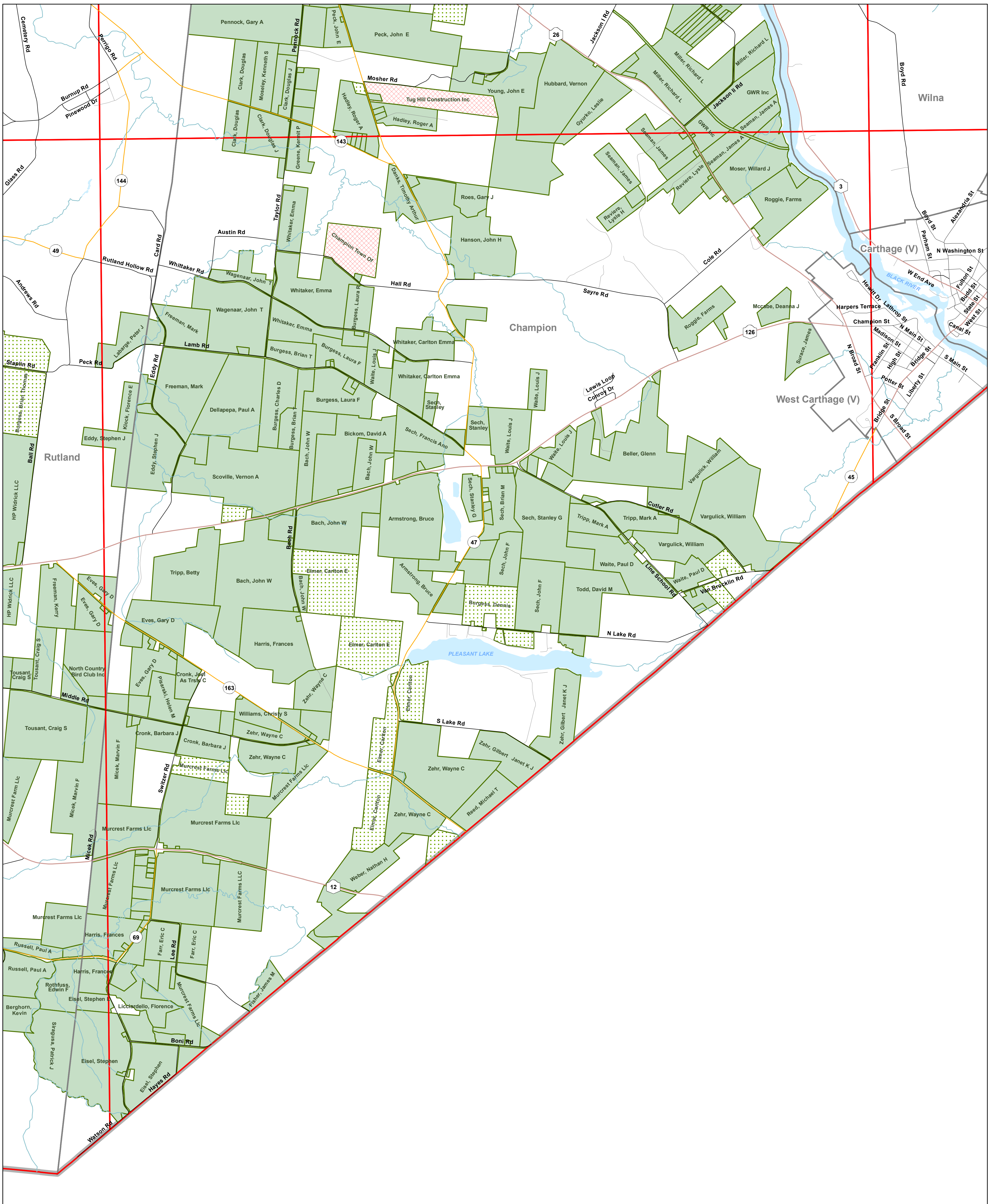
DATA SOURCES: Jefferson County Planning Department  
Jefferson County Real Property Services, NYS CSCIC

GEOGRAPHIC REFERENCE INFORMATION:  
Projection - New York State Plane Central  
North American Datum 83 Feet

0 2,000 4,000  
Feet

0 0.25 0.5 1  
Mile





COUNTY: Jefferson

DISTRICT NUMBER: 1

CREATION DATE: October 2006

TOWNS IN WHICH THE DISTRICT IS LOCATED:  
Adams, Champion, Ellisburg, Hounsfield, Lorraine,  
Rodman, Rutland, Watertown

7.5' QUADRANGLES ON WHICH THE DISTRICT IS LOCATED:  
Adams, Barnes Corners, Boylston Center, Copenhagen, Deferiet,  
Rodman, Rutland Center, Sackets Harbor, Sandy Creek, Watertown

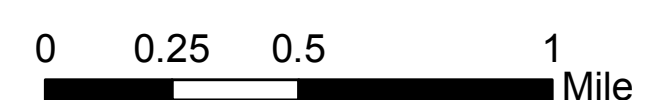
MAP SCALE: 1:24,000

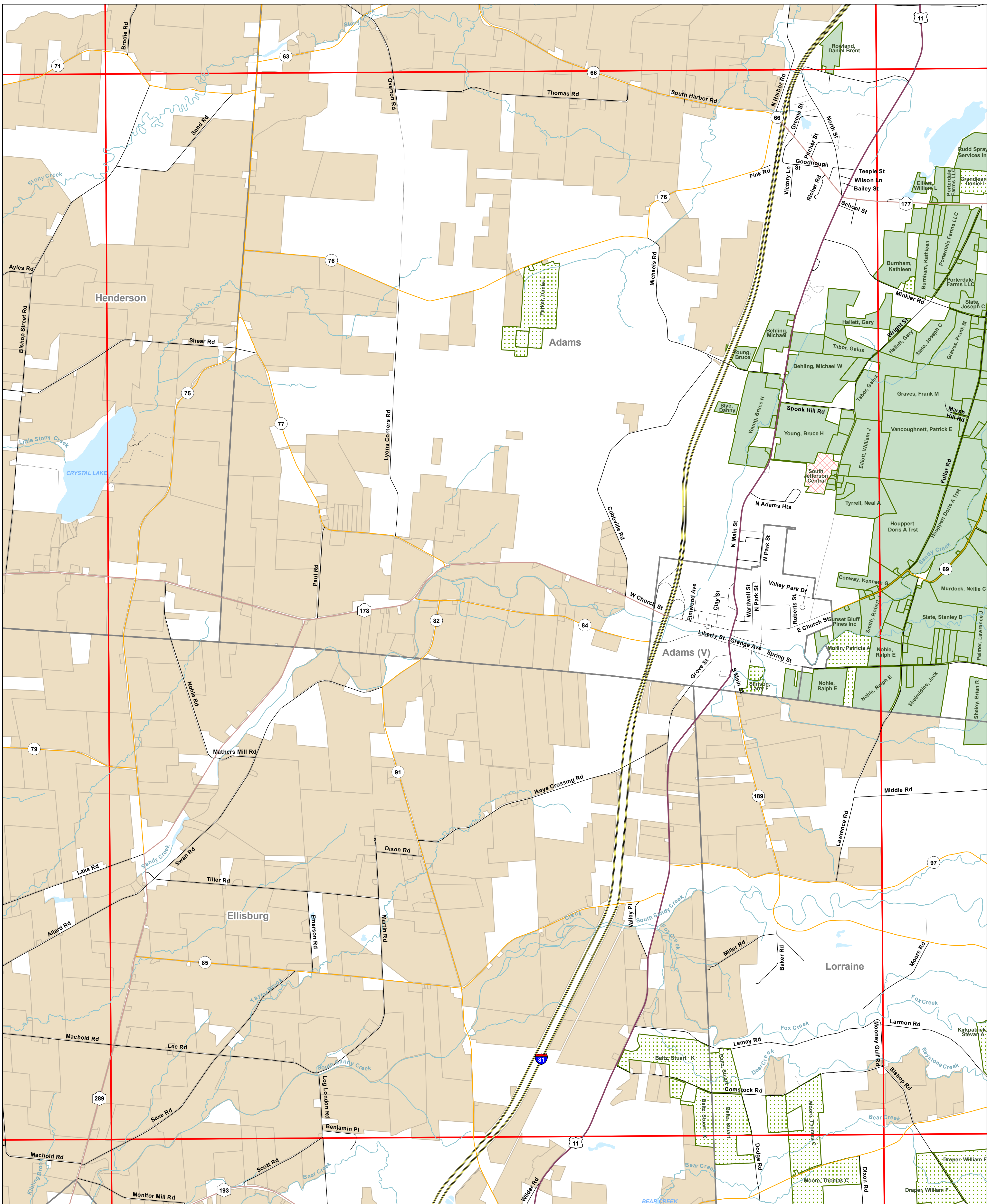
**MAP INDEX NUMBER:  
Map 5 Copenhagen Quad**

KEY	
	Agricultural District 1
	Parcel Added to Agricultural District 1
	Parcel Deleted from Agricultural District 1
	Agricultural District 2
	Agricultural District 3
	Town/Village Boundary
	County Boundary
	Map Index Boundary
	Town
	Village
	Private
	River/Stream
	Lake/Pond
	Interstate
	Federal
	State
	County

DATA SOURCES: Jefferson County Planning Department  
Jefferson County Real Property Services, NYS CSCIC

GEOGRAPHIC REFERENCE INFORMATION:  
Projection - New York State Plane Central  
North American Datum 83 Feet





COUNTY: Jefferson

DISTRICT NUMBER: 1

CREATION DATE: October 2006

TOWNS IN WHICH THE DISTRICT IS LOCATED:  
Adams, Champion, Ellisburg, Hounsfield, Lorraine,  
Rodman, Rutland, Watertown

7.5' QUADRANGLES ON WHICH THE DISTRICT IS LOCATED:  
Adams, Barnes Corners, Boylston Center, Copenhagen, Deferiet,  
Rodman, Rutland Center, Sackets Harbor, Sandy Creek, Watertown

MAP SCALE: 1:24,000

**MAP INDEX NUMBER:  
Map 6 Adams Quad**

KEY	
	Interstate
	Federal
	State
	County
	Town
	Village
	Private
	Agricultural District 1
	Parcel Added to Agricultural District 1
	Parcel Deleted from Agricultural District 1
	Agricultural District 2
	Agricultural District 3
	Town/Village Boundary
	County Boundary
	Map Index Boundary
	River/Stream
	Lake/Pond

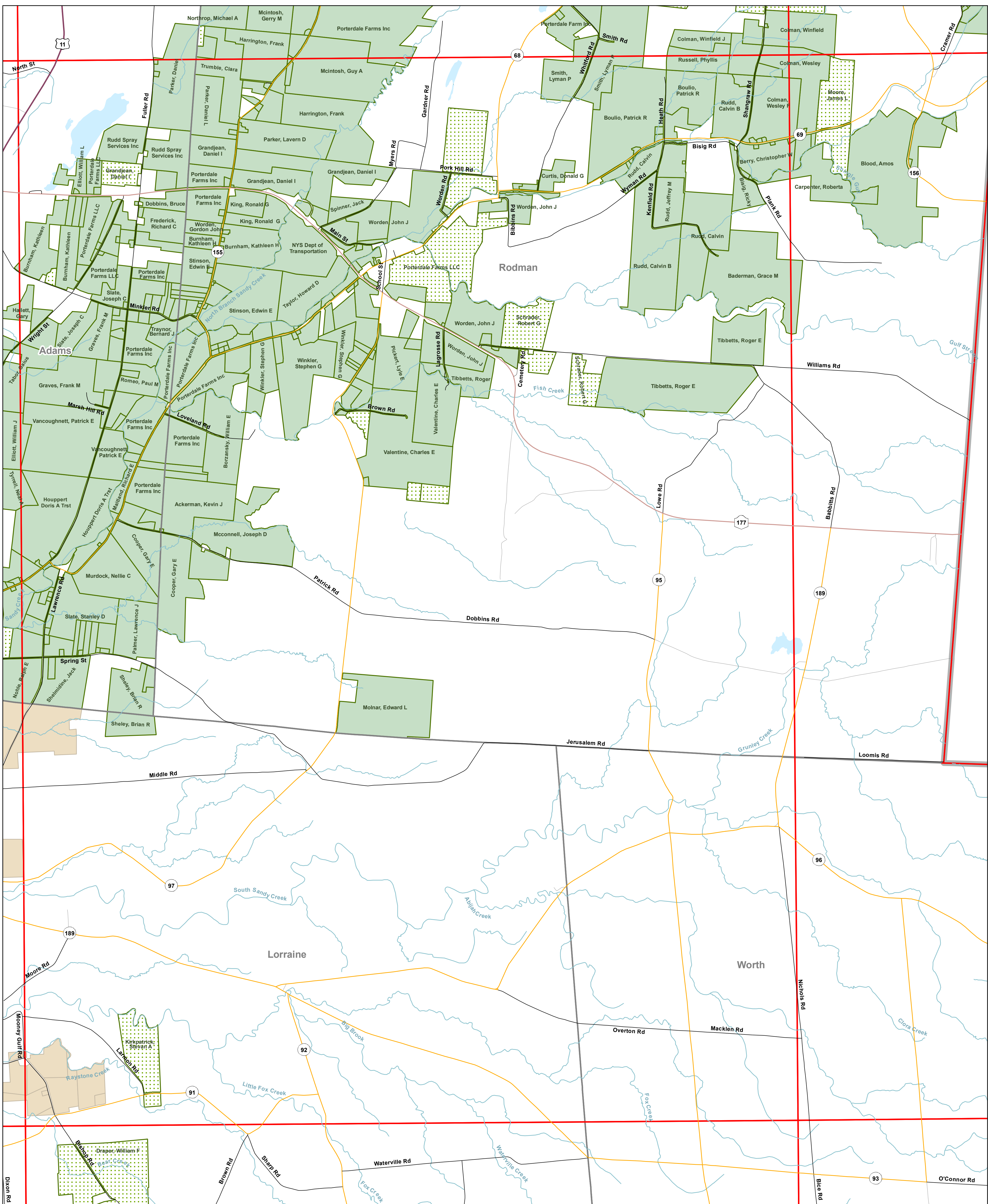
DATA SOURCES: Jefferson County Planning Department  
Jefferson County Real Property Services, NYS CSCIC

GEOGRAPHIC REFERENCE INFORMATION:  
Projection - New York State Plane Central  
North American Datum 83 Feet

0 2,000 4,000  
Feet

0 0.25 0.5 1  
Mile





**MAP INDEX NUMBER:  
Maps 7 and 8 Rodman and Barnes Corners Quads**

COUNTY: Jefferson

DISTRICT NUMBER: 1

CREATION DATE: October 2006

TOWNS IN WHICH THE DISTRICT IS LOCATED:  
Adams, Champion, Ellisburg, Hounsfield, Lorraine,  
Rodman, Rutland, Watertown

7.5' QUADRANGLES ON WHICH THE DISTRICT IS LOCATED:  
Adams, Barnes Corners, Boylston Center, Copenhagen, Deferiet,  
Rodman, Rutland Center, Sackets Harbor, Sandy Creek, Watertown

MAP SCALE: 1:24,000

KEY	
	Interstate
	Federal
	State
	County
	Town
	Village
	Private
	Agricultural District 1
	Parcel Added to Agricultural District 1
	Parcel Deleted from Agricultural District 1
	Agricultural District 2
	Agricultural District 3
	Town/Village Boundary
	County Boundary
	Map Index Boundary
	River/Stream
	Lake/Pond

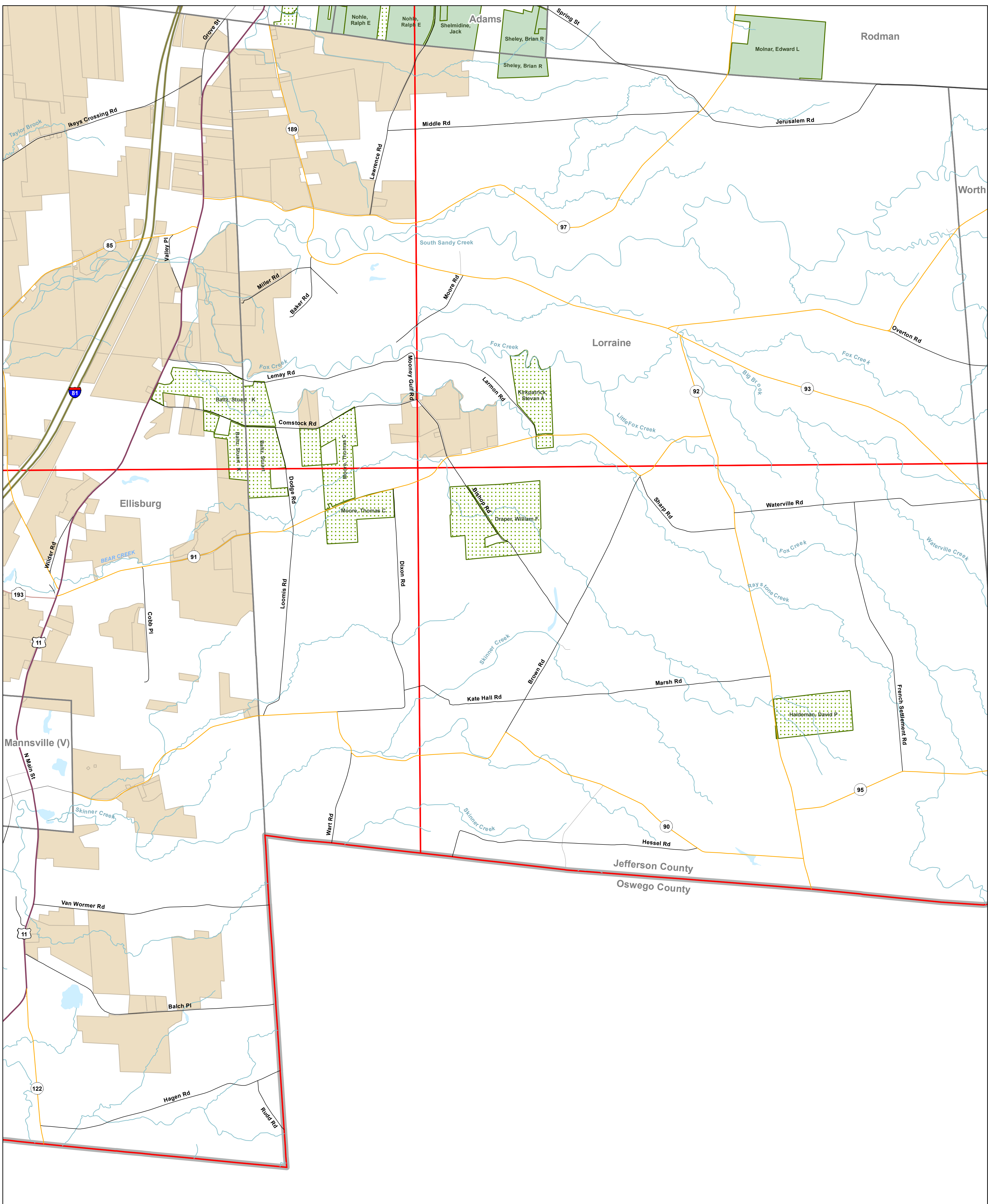
DATA SOURCES: Jefferson County Planning Department  
Jefferson County Real Property Services, NYS CSCIC

GEOGRAPHIC REFERENCE INFORMATION:  
Projection - New York State Plane Central  
North American Datum 83 Feet

0 2,000 4,000  
Feet

0 0.25 0.5 1  
Mile





COUNTY: Jefferson

DISTRICT NUMBER: 1

CREATION DATE: October 2006

TOWNS IN WHICH THE DISTRICT IS LOCATED:  
Adams, Champion, Ellisburg, Hounsfield, Lorraine,  
Rodman, Rutland, Watertown

7.5' QUADRANGLES ON WHICH THE DISTRICT IS LOCATED:  
Adams, Barnes Corners, Boylston Center, Copenhagen, Deferiet,  
Rodman, Rutland Center, Sackets Harbor, Sandy Creek, Watertown

MAP SCALE: 1:24,000

**MAP INDEX NUMBER:  
Maps 9 and 10 Sandy Creek and Boylston Center Quads**

KEY	
	Interstate
	Federal
	State
	County
	Town
	Village
	Private
	Agricultural District 1
	Parcel Added to Agricultural District 1
	Parcel Deleted from Agricultural District 1
	Agricultural District 2
	Agricultural District 3
	Town/Village Boundary
	County Boundary
	Map Index Boundary
	River/Stream
	Lake/Pond

DATA SOURCES: Jefferson County Planning Department  
Jefferson County Real Property Services, NYS CSCIC

GEOGRAPHIC REFERENCE INFORMATION:  
Projection - New York State Plane Central  
North American Datum 83 Feet

0 2,000 4,000  
Feet

0 0.25 0.5 1  
Mile

